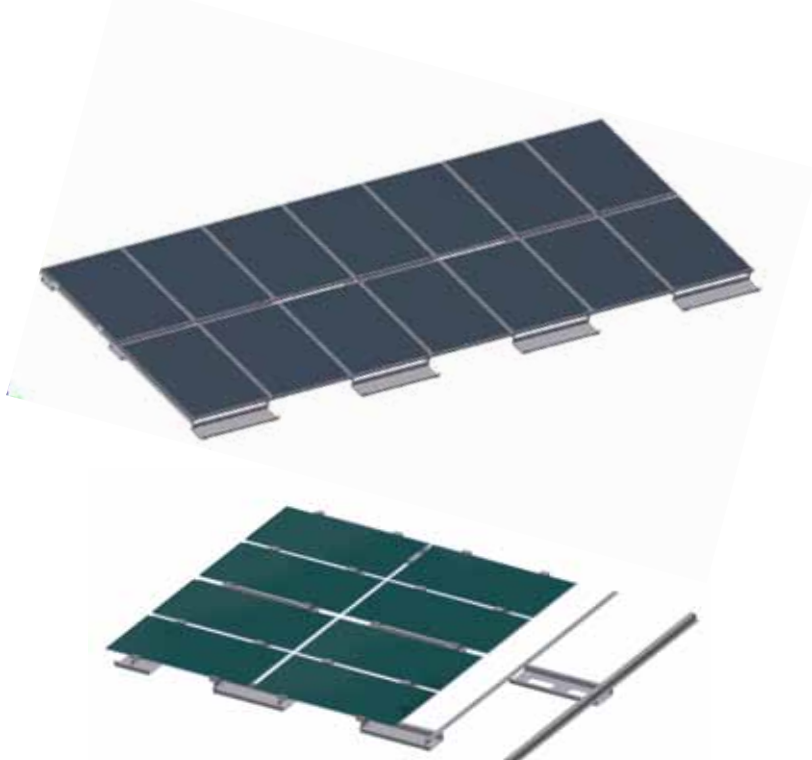


PlanTec RP FS/SF

Key data

- Roof parallel orientation
- For framed and frameless modules
- Low ballast and ultra light aluminum construction
- Optimized plot utilisation possible
- Wind and suction tight system
- Cost-efficient and transport-friendly solution

	PlanTec DP FS (frameless)	PlanTec DP SF (framed)
Usable roof types	Flat roofs	
Usable module types	First Solar® module series FS 2 and FS 3 Calyxo® module series CX Abound Solar® module series AB1	Solar Frontier®
	different module manufacturer possible on request	
Material	High quality Al Mg 3 (EN AW-5754)	
Module inclination	Dachparallel	
Basic width	2747 mm	2737 mm
Weight of the sub-construction	Approx. 2 kg/m ²	Approx. 2,5 kg/m ²
Total weight (incl. module, alu-UK and T-cable)	Approx. 17 kg/m ²	Approx. 19 kg/m ²
Total weight	Approx. 170 kg/kWp (First Solar-module 80 W)	Approx. 170 kg/kWp (Solar Frontier-module 140 W)



Take a look to understand our names for PlanTec:
EW - East-West
RP - Roof parallel
FS - for frameless modules
SF - for framed modules